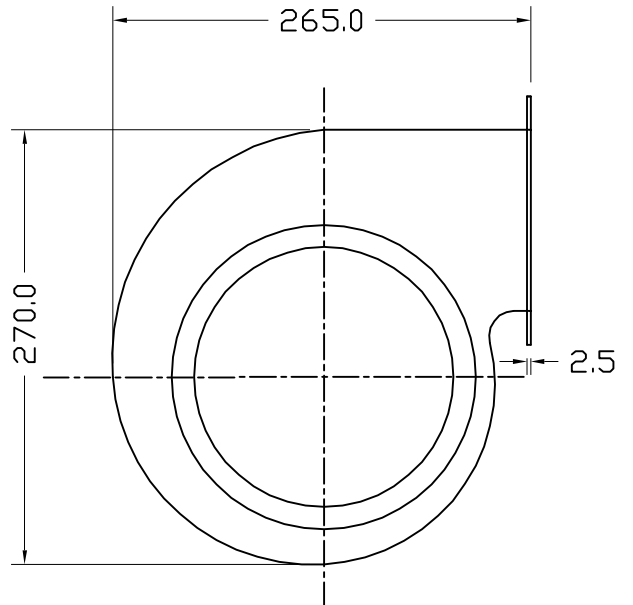
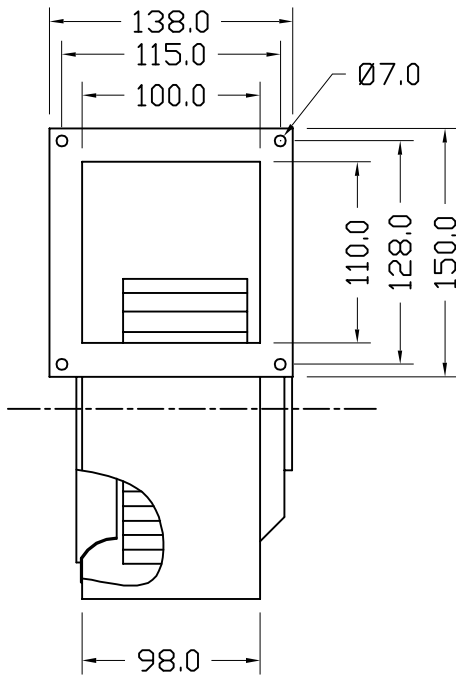




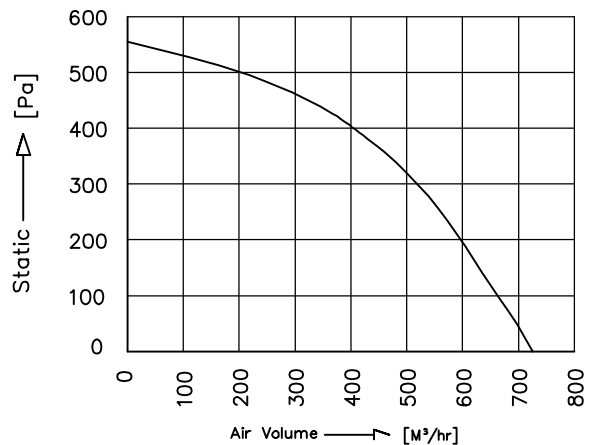
TECHNICAL DATA SHEET



SPECIFICATION (50Hz)

PERFORMANCE CURVE

Voltage (V)	230
Watt (W)	260
Amps (A)	1.15
Speed (rpm)	2100
Capacitor (µF)	6.0
Airflow (m ³ /hr)	700
Noise (dbA)	82
Net Weight (Kg)	6.2



Conversion: 100pa ≈ 0.4" H2O 100m³/hr ≈ 60cfm

All information contained in this document is CONFIDENTIAL and the property of VBM. Reproduction of this any form is to be done with the specific permission of the company.

***Material :**

- Impeller: G.I, Zinc Plated
- Housing: Steel, powder coated
- Rotor: Powder coated

*Type of protection: IP-44

*Insulation Class: "F"- Class

*Bearing: Maintenance free Ball Bearing.

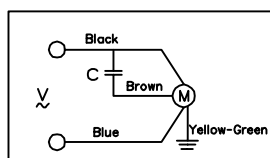
*Permissible ambient temperature: 0 to 60° C

*High Voltage test according to IS:3588-1987

*Balancing Grade: Fans conform 6.3 Grade as recommended by IS 19401-2003

*Direction of rotation: Clockwise, Seen on rotor

***Wiring Diagram :**



NOTE: ALL DIMENSIONS ARE IN MM.

MODEL : SI23/18028/S4

SCALE: NTS | Page 1 of 1

REV/DATE: 00,15.02.2016

PREPARED BY : J.G.P

CHECKED BY : D.B.M

