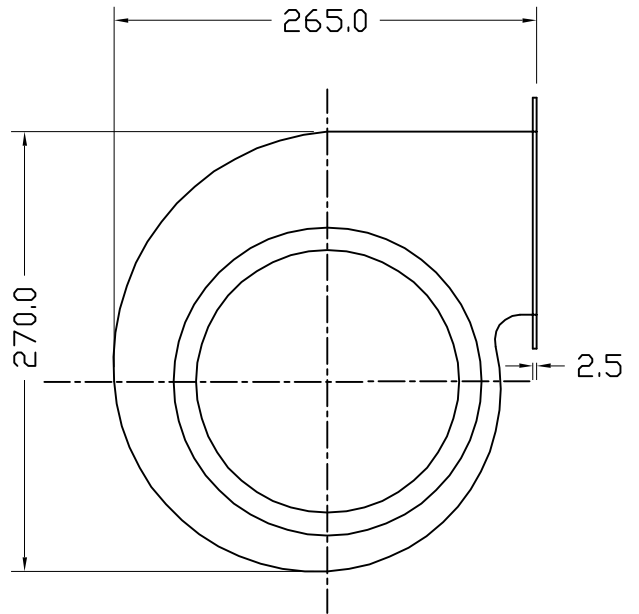
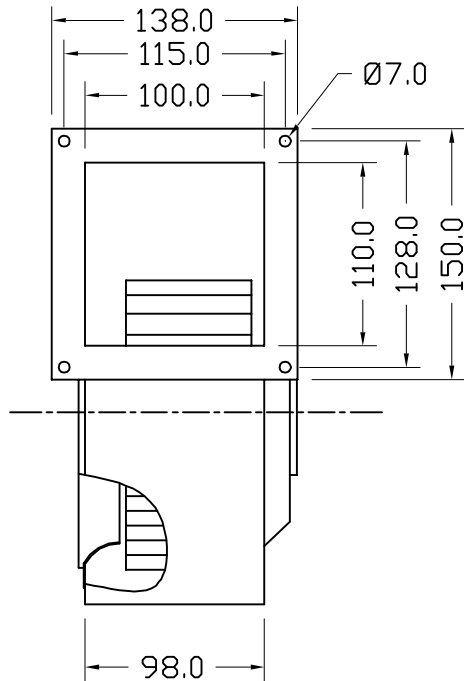




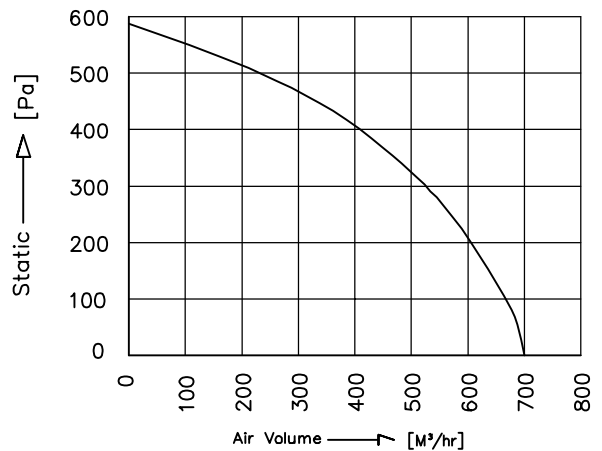
# TECHNICAL DATA SHEET



## SPECIFICATION (50Hz)

|                              |      |
|------------------------------|------|
| Voltage (V)                  | 415  |
| Watt (W)                     | 290  |
| Amps (A)                     | 0.85 |
| Speed (rpm)                  | 2550 |
| Capacitor (µF)               | ---  |
| Airflow (m <sup>3</sup> /hr) | 700  |
| Noise (dbA)                  | 82   |
| Net Weight (Kg)              | 6.2  |

## PERFORMANCE CURVE



Conversion: 100pa ≈ 0.4" H2O    100m<sup>3</sup>/hr ≈ 60cfm

### \*Material :

- Impeller: G.I, Zinc Plated
- Housing: Steel, powder coated
- Rotor: Powder coated

\*Type of protection: IP-44

\*Insulation Class: "F"- Class

\*Bearing: Maintenance free Ball Bearing.

\*Permissible ambient temperature: 0 to 60° C

\*High Voltage test according to IS:3588-1987

\*Balancing Grade: Fans conform 6.3 Grade as recommended by IS 19401-2003

\*Direction of rotation: Clockwise, Seen on rotor

All information contained in this document is CONFIDENTIAL and the property of VBM.Reproduction of this any form is to be done with the specific permission of the company.

NOTE: ALL DIMENSIONS ARE IN MM.

MODEL : S44/I18028/K4

SCALE: NTS Page 1 of 1

REV/DATE: 00,15.02.2016

PREPARED BY : J.G.P

CHECKED BY : D.B.M

